

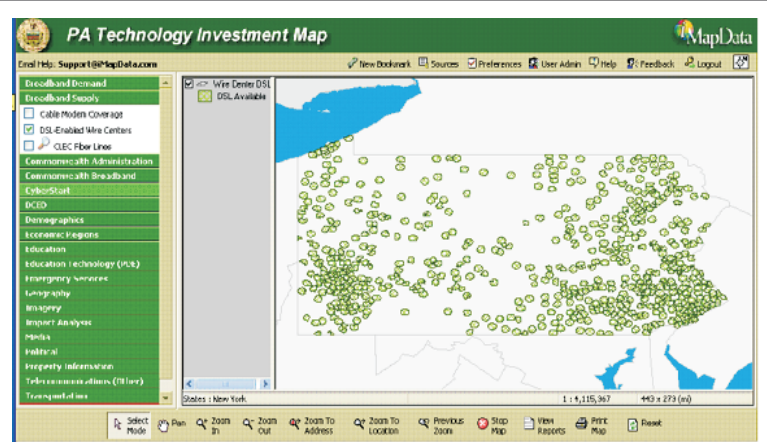
Technology Investment Map

> ready > set > succeed

The Pennsylvania Technology Investment Map (PTIM) is a secure, internet-based interactive map that allows government and private sector partners to view detailed maps of the Commonwealth's broadband infrastructure. With accuracy down to the street level, users can see details of:

- DSL coverage
- Cable modem coverage
- Cell towers
- Land line switches
- Population demographics
- Business demographics
- Schools
- Hospitals
- Government facilities

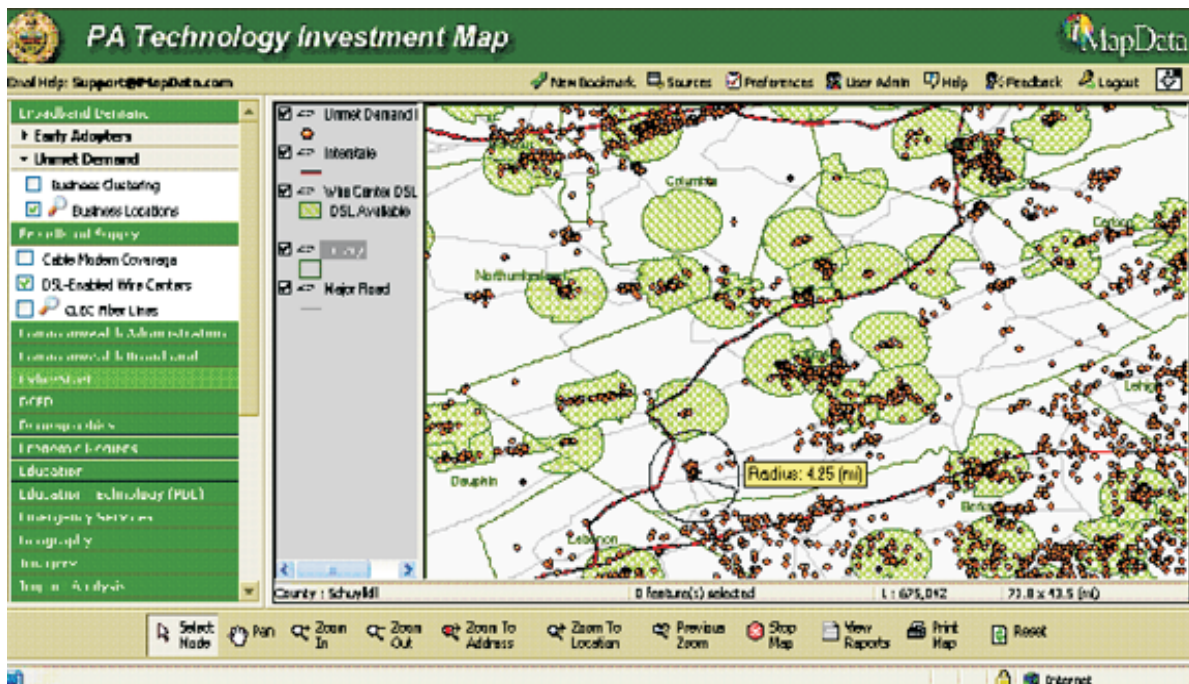
The system gives a clearer picture of the investment opportunities and challenges within the state and is primarily intended to be used as a tool to enhance economic development activities.



DSL availability

The PTIM includes a unique combination of commercially available data (such as Dun & Bradstreet) along with information supplied by multiple Commonwealth agencies including Labor and Industry, Department of Community and Economic Development, Department of Education, and analysis by the Legislative Office for Research Liaison. By combining these data sets along with original research and information provided by telecom providers within the Commonwealth, the system gives a clearer picture of the investment opportunities and challenges within the state and is primarily intended to be used as a tool to enhance economic development activities. PTIM users will be able to locate broadband services in their community and determine the impact on population demographics, schools, hospitals, and government facilities. Conversely, it helps identify communities and businesses that are at a competitive disadvantage in the regional and global marketplace because they are not adequately connected to the digital economy.

The system is being made available to all state agencies, economic development service providers, and private sector partners at no or modest cost. Agencies can easily upload their own data for display, dissemination and analysis.



In the example above, business locations within a 4.25 radius of Pine Grove, Schuylkill County without DSL service are selected for detailed analysis. The data reveals that 122 businesses with 2,015 employees are at a competitive disadvantage without the service. Information such as this is invaluable in economic development investment decision making. PTM is protected by three levels of password security to enable access, thereby assuring data providers of the appropriate level of confidentiality.

All interested parties are encouraged to contact the Technology Investment Office at the PA Department of Community and Economic Development, by telephone 717-787-4147 or e-mail ra-technvestment@state.pa.us to discuss your needs.